



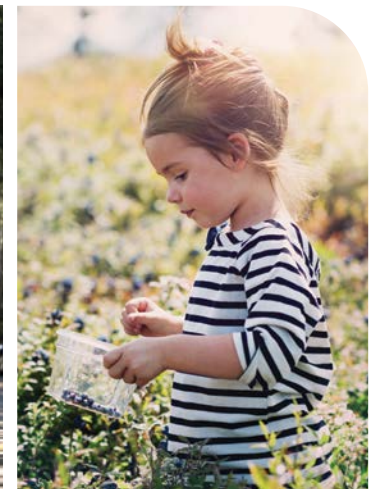
Partington
CREEK

ADVANCE PREVIEW
PACKAGE



SET APART BY LOCATION

Welcome to Partington Creek by Polygon, an elevated community of timeless three and four bedroom townhomes nestled on the terraced eastern foothills of Burke Mountain, overlooking the lush farmlands along the Pitt River.



Discover an exclusive community that has been carefully crafted into the hillside for those who welcome and appreciate a natural lifestyle. Living alongside a lush protected green belt and a rocky bluff creates spectacular privacy for the entire community.



MINNEKHADA REGIONAL PARK



TRABOULAY POCO TRAIL



IBEX CAFÉ + KITCHEN



FRANK'S TRAIL



1 FUTURE BURKE MOUNTAIN VILLAGE

Burke Mountain Village is envisioned with all generations in mind: a community centre and plaza, green paths and pocket parks, high streets for retail, and lots of spots to stop for coffee or a light lunch.

2 PINECONE BURKE PARK

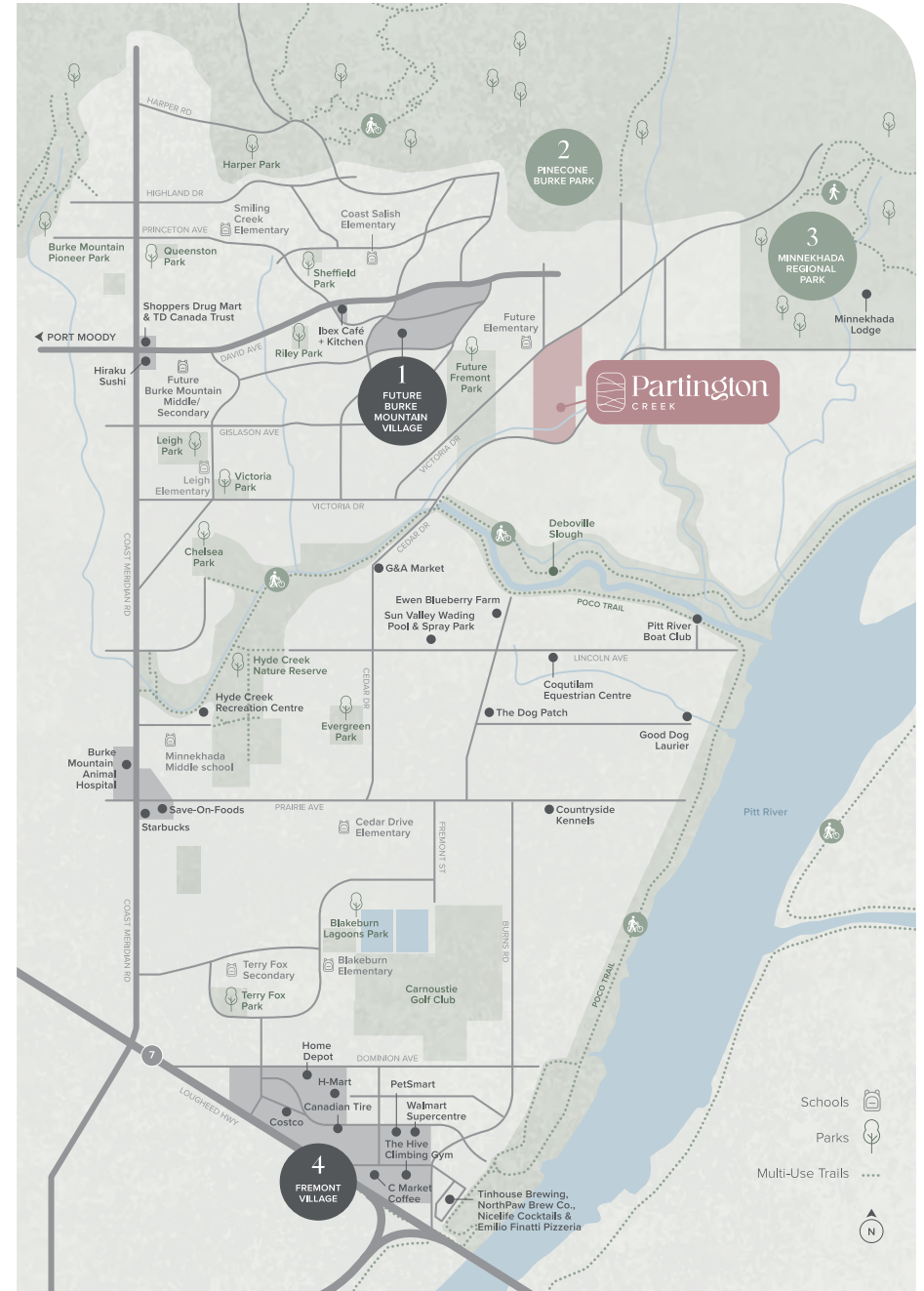
With its network of 88 trails that are marked according to difficulty (and some trails dating back to the logging days), Mount Burke is a fantastic playground for all-terrain and downhill mountain biking enthusiasts.

3 MINNEKHADA REGIONAL PARK

A brief drive east along Victoria Drive takes you to one of the most breathtaking, family-friendly parks in the area. Minnehada consists of forest, marsh and rocky outcrops that make hiking its 10 km trail network a highly repeatable activity. Wildlife sightings are virtually guaranteed, and on the first Sunday of most months, historic Minnehada Lodge opens its cozy interiors, boardwalk and Japanese garden to all.

4 FREMONT VILLAGE

Just south of Port Coquitlam and a short drive from Partington Creek is Fremont Village. This concentrated commercial area features a surprising range of destination retail spaces, from big-box stores to mom 'n pop shops, interspersed with gyms and climbing centres, cafés and bakeries, distilleries and family restaurants. It's also a beautiful end point for a bike ride down the Coquitlam Trail, taking in the fresh air and sights along the banks of the Pitt River.



SET APART BY
LIFESTYLE

Community life is making a comeback at Partington Creek. A return to quiet tree-lined streets, where passing neighbours stop to chat, children play freely in the parks, and residents take time to appreciate the calm surroundings.





FRESH & FUNCTIONAL

The homes at Partington Creek have been thoughtfully designed with comfort and efficiency in mind. Overheight ceilings and smart floorplans make the most of every room in the house. Refined materials like stone, marble and wood finishes bring nature into the home.



SMART & SENSIBLE

Enhanced livability comes standard at Partington Creek. Advanced TELUS SmartHome technologies are included in all homes, along with a heat-pump system to efficiently warm and cool your home for year-round comfort. Private side-by-side double-car garages, equipped with a Level 2 EV outlet, provide a safe haven for your belongings and vehicles.

SET APART BY
LUXURY

Partington Creek's residents-only, resort-style clubhouse is an exclusive retreat on Burke Mountain. Here, self-care becomes second nature, with access to the private fitness centre, outdoor pool and hot tub. Memorable gatherings are guaranteed in the Great Room, with its well-appointed kitchen, lounge and fireplace. The outdoor firepit, covered barbeque area, and a sun deck provide residents with a luxurious open-air extension of home to enjoy all year-round.





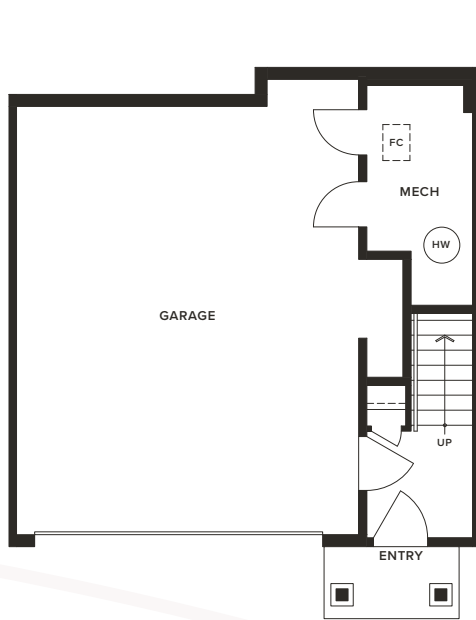
FLOORPLANS
& FEATURES

Plan A

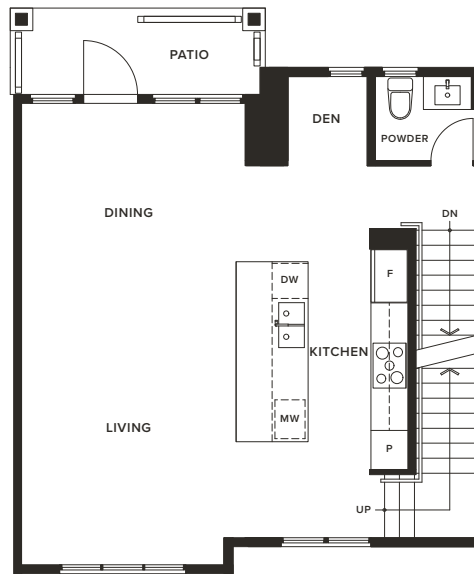
AMBER SERIES

3 Bedroom + Den, 2.5 Bathroom
Approx: 1,453 Sq.Ft.

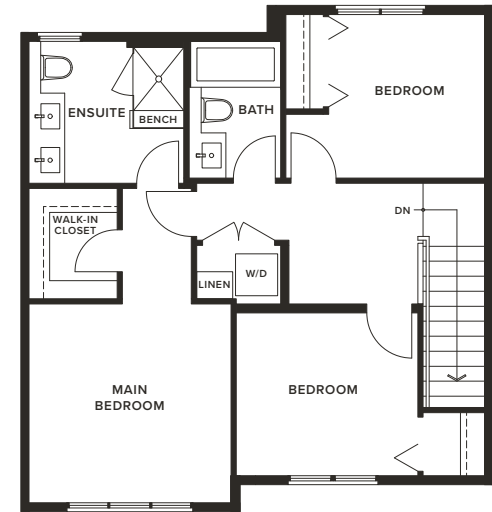
DRAFT



LOWER



MAIN



UPPER

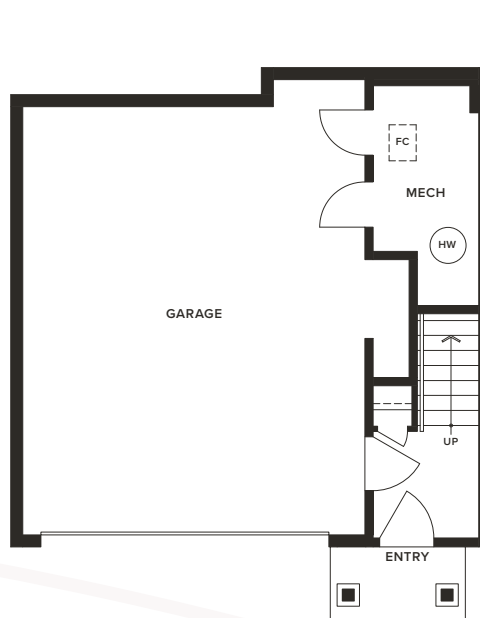
Plan B

BIRCH SERIES

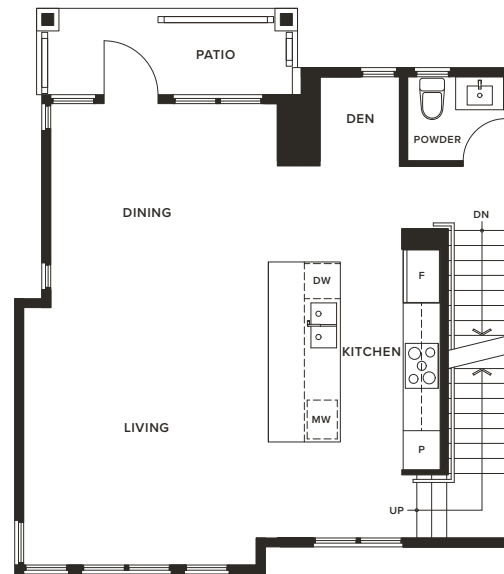
3 Bedroom + Den, 2.5 Bathroom

Approx: 1,517 Sq.Ft.

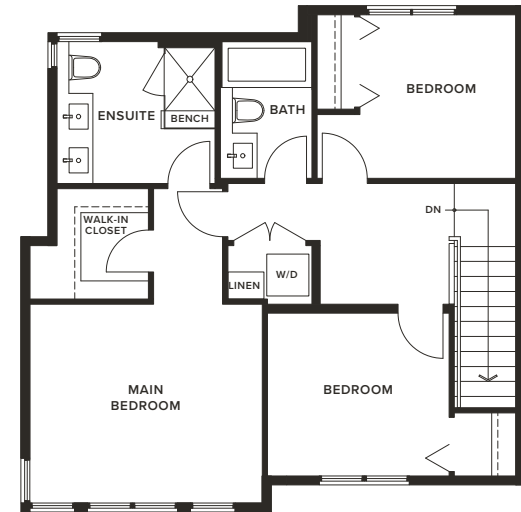
DRAFT



LOWER



MAIN



UPPER

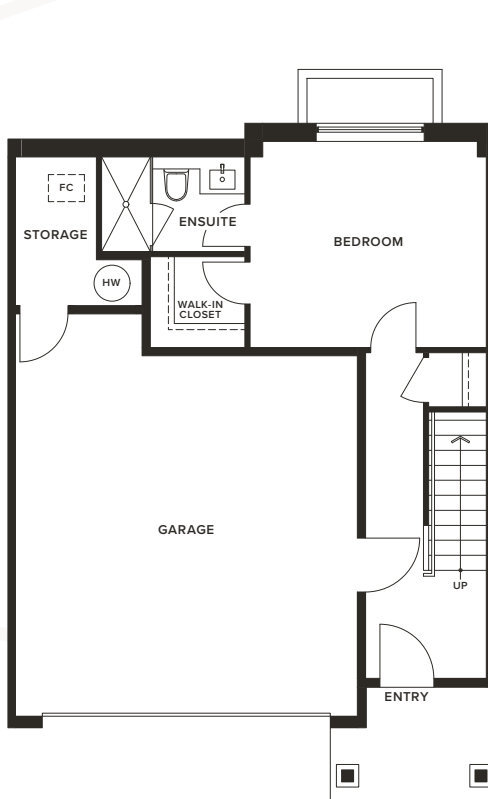
Plan C

CLOVE SERIES

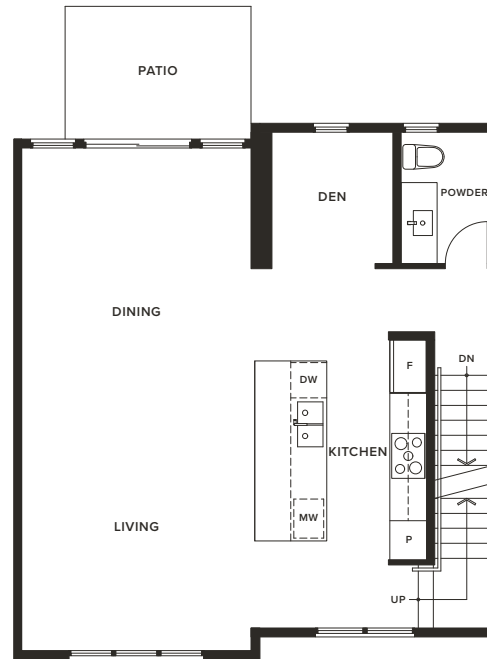
4 Bedroom + Den, 3.5 Bathroom

Approx: 1,937 Sq.Ft.

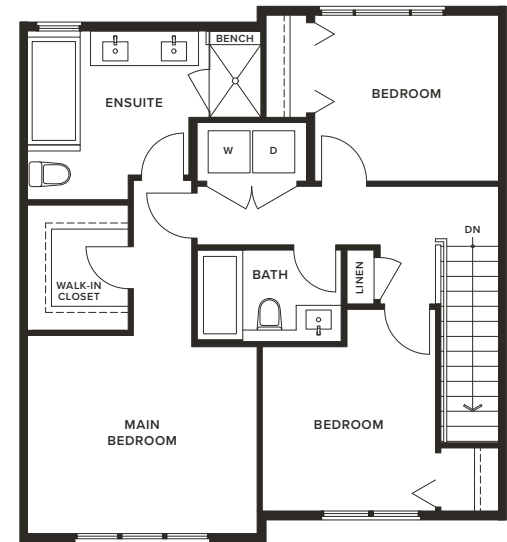
DRAFT



LOWER



MAIN



UPPER

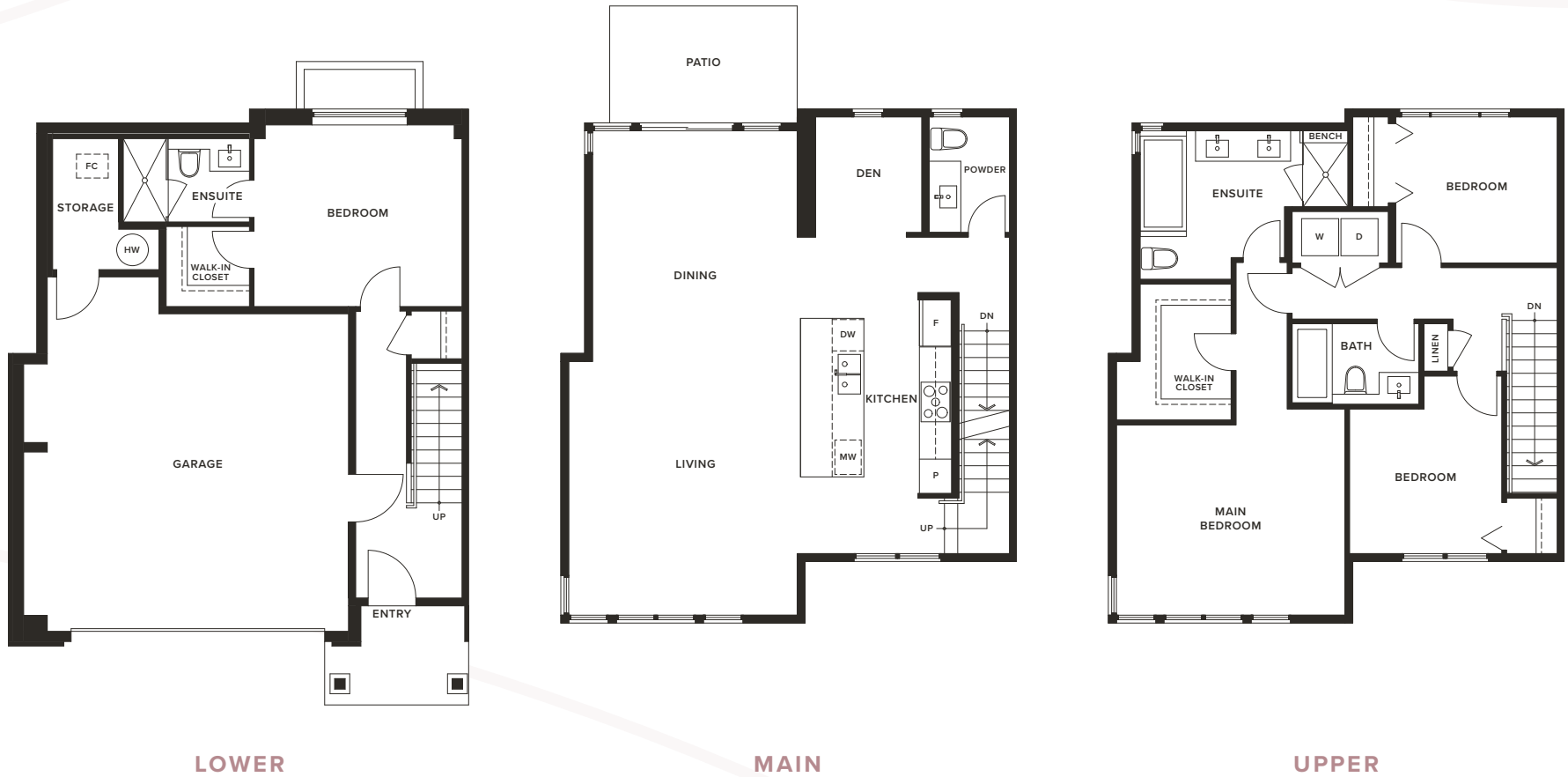
Plan D

DOGWOOD SERIES

4 Bedroom + Den, 3.5 Bathroom

Approx: 2,077 Sq.Ft.

DRAFT



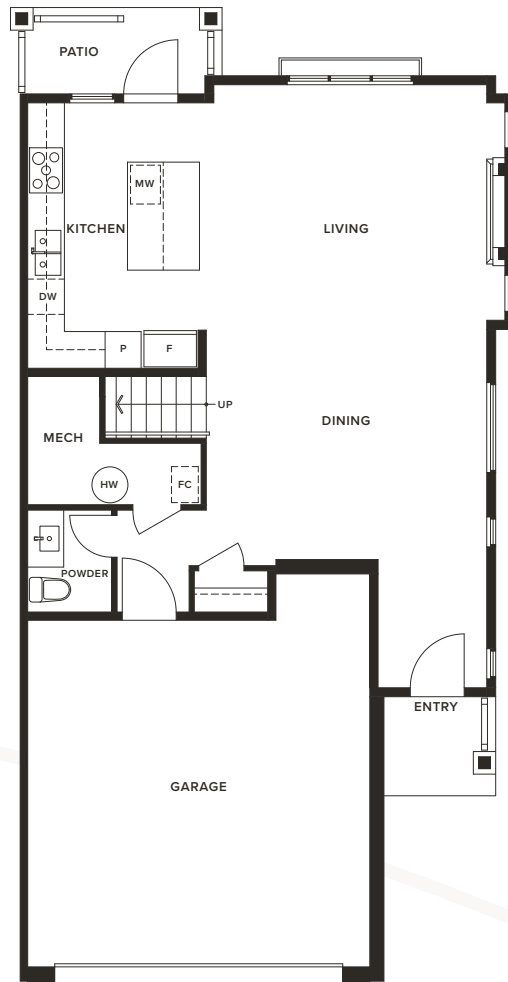
Plan E

EUCALYPTUS SERIES

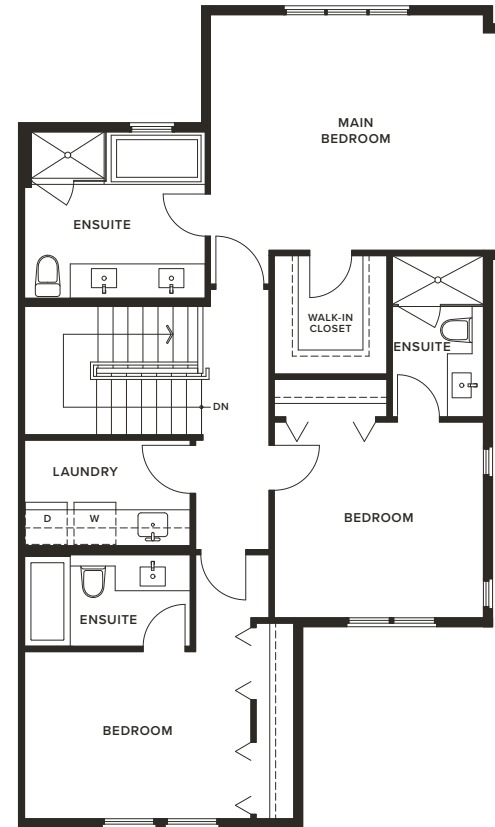
3 Bedroom, 3.5 Bathroom

Approx: 1,840 Sq.Ft.

DRAFT



MAIN



UPPER

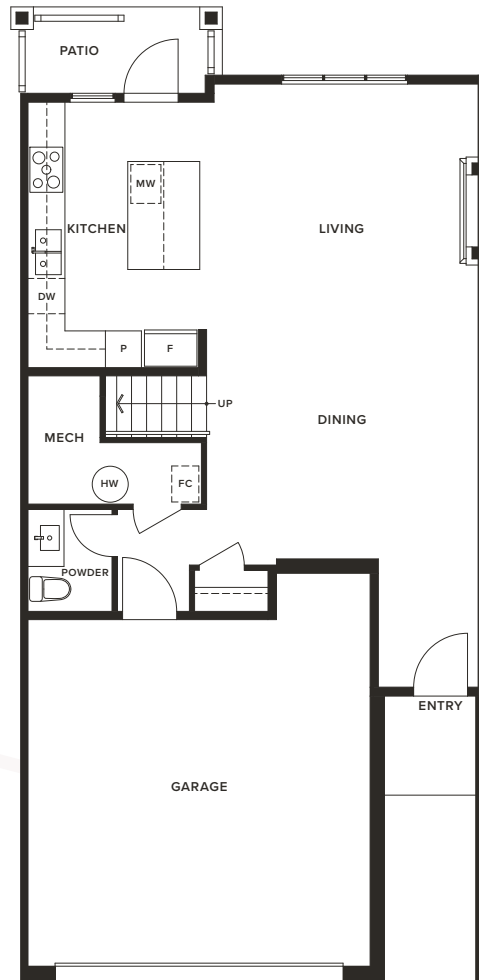
Plan E1

EUCALYPTUS SERIES

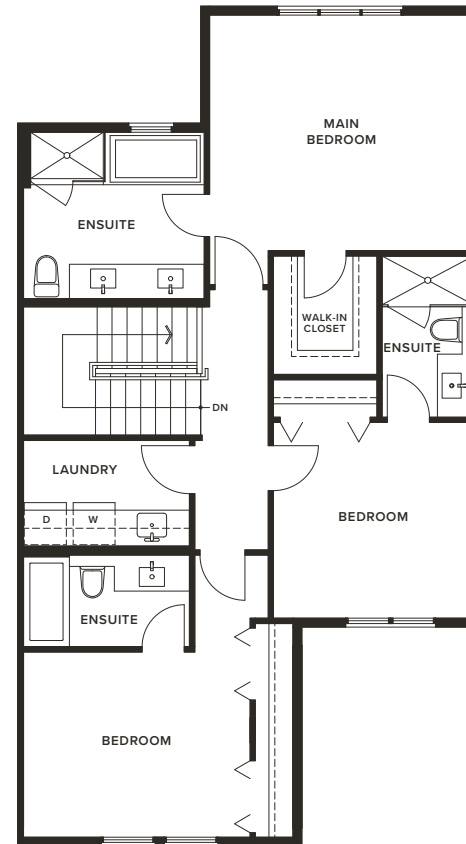
3 Bedroom, 3.5 Bathroom

Approx: 1,786 Sq.Ft.

DRAFT



MAIN



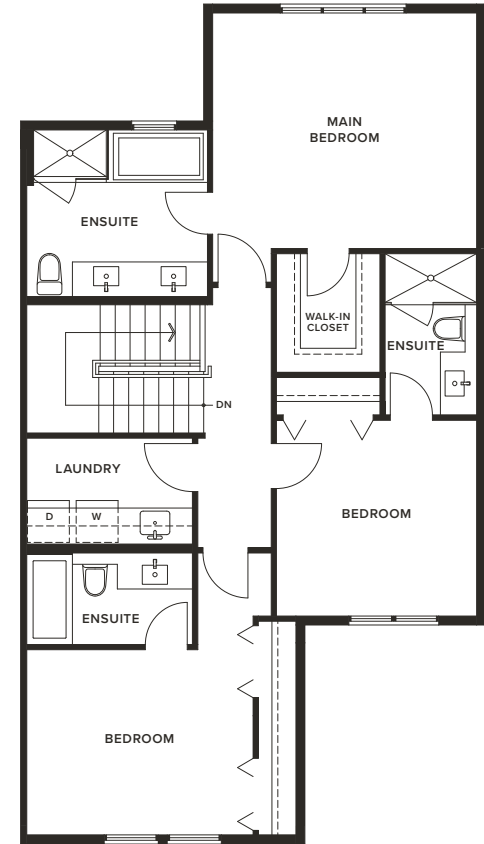
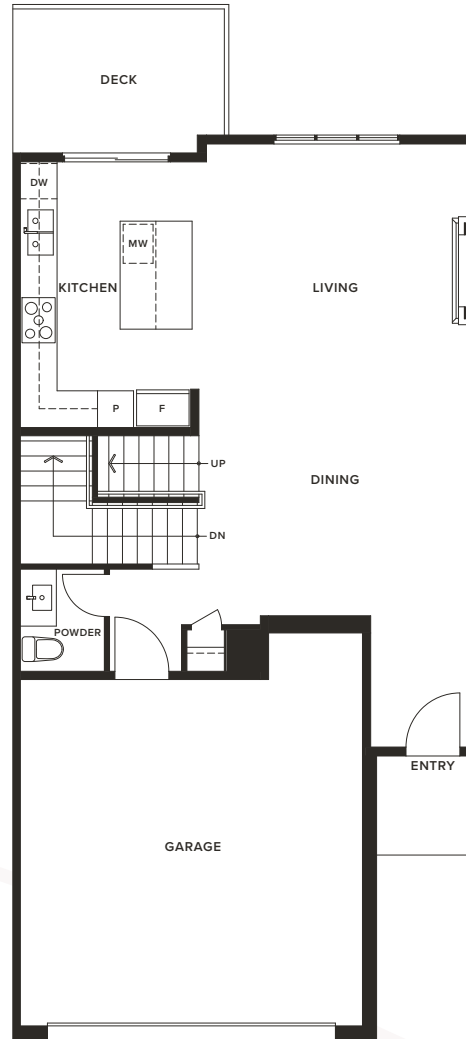
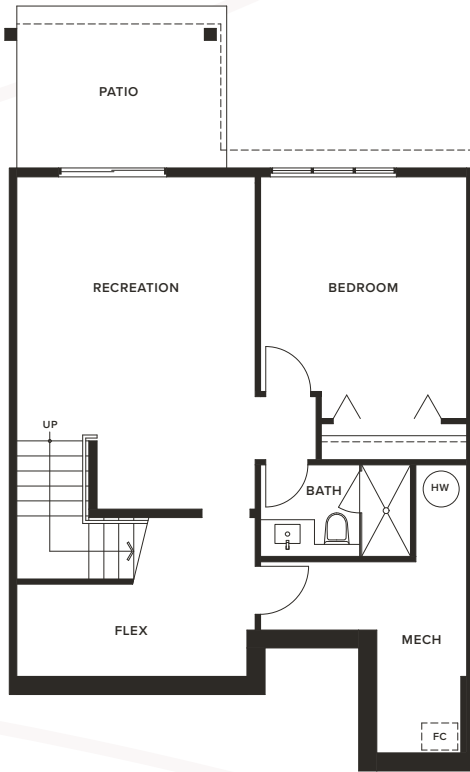
UPPER

Plan F

FIG SERIES

4 Bedroom + Recreation Room + Flex, 4.5 Bathroom
Approx: 2,540 – 2,551 Sq.Ft.

DRAFT

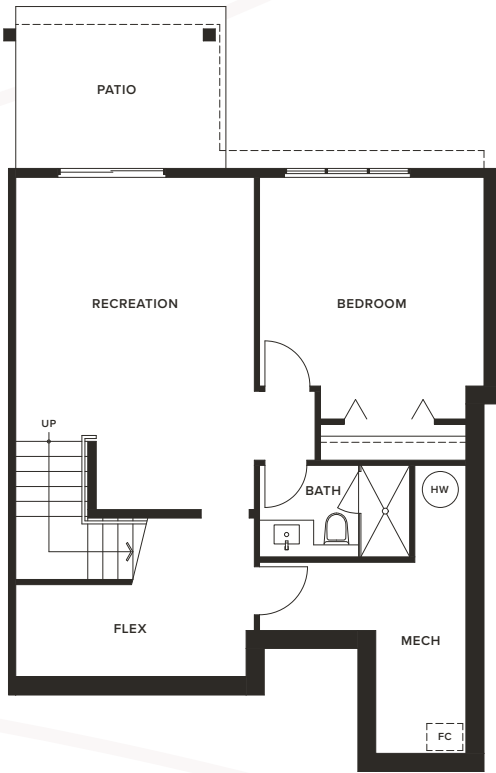


Plan G

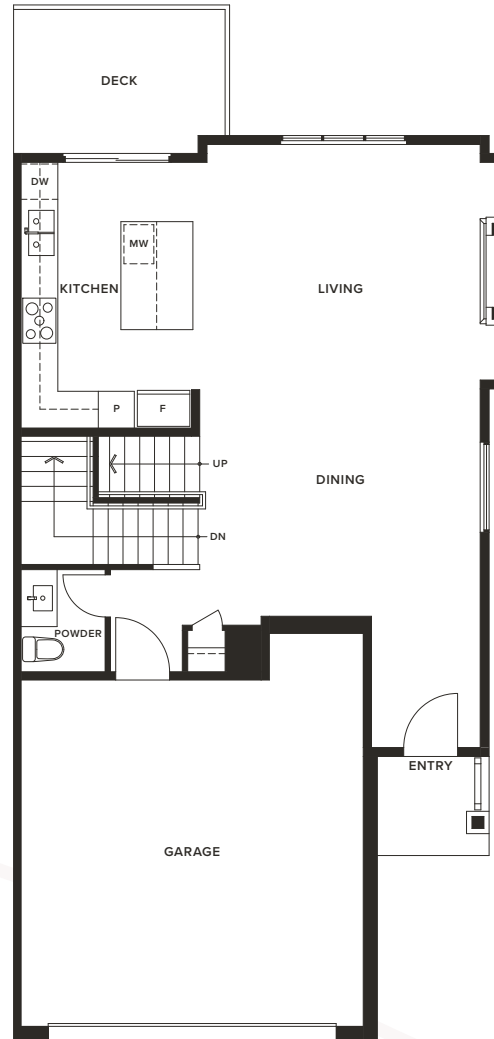
GARDENIA SERIES

4 Bedroom + Recreation Room + Flex, 4.5 Bathroom
Approx: 2,637 Sq.Ft.

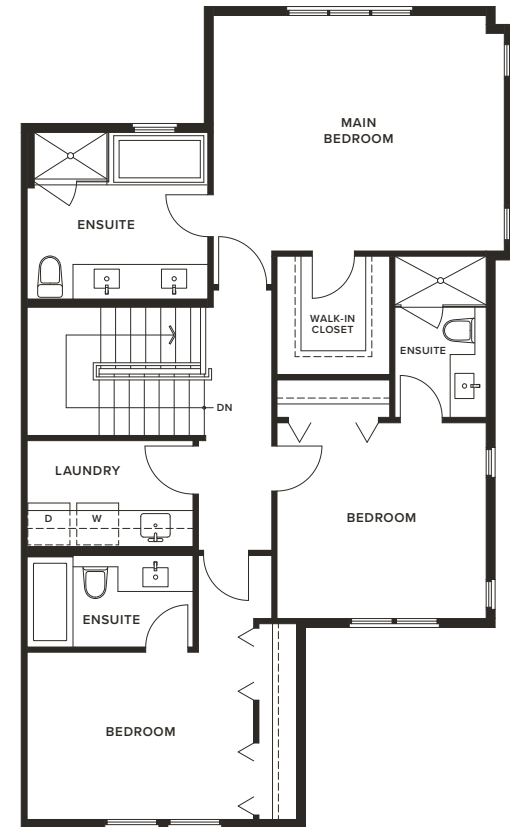
DRAFT



LOWER



MAIN



UPPER

Features

DRAFT



First Impressions

- Situated in Coquitlam's picturesque Burke Mountain neighbourhood, Partington Creek is Polygon's newest addition to this nature-filled, family-friendly community
- A limited collection of Craftsman-style townhome residences features unique detailing such as large, welcoming overhangs with natural wood soffits, stone masonry, shingle siding, wood bracket accents, decorative touches (most homes) and planter boxes (some homes)
- Streetscapes and pathways impress with wood picket fencing and individual entry gates (some homes)
- A central green space features children's play elements and two landscaped plazas for catching up with neighbours over morning coffee
- Convenient access to the nearby Minnehada Regional Park, Fremont Park and the rest of Burke Mountain's extensive trail network makes getting outdoors a breeze

- Discover country club living at the Creekside Club – a residents-only clubhouse with over 8,000 square feet of resort-style amenities – featuring a pool and hot tub, a poolside lounge equipped with an outdoor barbecue area, a firepit and dining tables, a fully equipped fitness studio, a games room, a kids' playroom and a dog wash

Modern Interiors

- Heritage-style, custom-coloured fibreglass front-entry doors are accented with black hardware, glass panels and transom windows (most homes)
- A custom entry plaque, with lighting and a doorbell, welcomes you home
- Warm wood laminate floors throughout the main and lower levels set the tone for rich design throughout
- Maintain the ideal interior environment in any season with an air conditioning system to warm and cool your home, using an electronic smart thermostat

- Heritage-style wood doors enhanced with brushed chrome hardware complement the interiors
- Choose from two designer-selected colour schemes: Pebble and Stream
- Overheight ceilings on the main floor add an elegant, airy ambience
- Cozy electric fireplace with custom surround in the living room (floorplan-specific)
- Plush and durable carpeting in hallways, in bedrooms and on stairs puts comfort at your feet
- Expansive low-E windows ensure light-filled interiors and views of the surrounding greenery while contributing to energy efficiency
- Convenient roller blinds on windows and sliding doors are included
- Entertain on generous decks or patios equipped with a barbecue gas connector, and enjoy outdoor living in your own yard

Gourmet Kitchens

- Modern cabinetry in light wood or matte white is elegantly matched with contemporary brushed chrome pulls
- Experience the luxury of an expansive kitchen island, engineered stone countertops and a full-height marble tile backsplash
- Sleek stainless steel appliances include:
 - 36"-wide Fisher & Paykel French-door refrigerator with icemaker, integrated into custom cabinetry
 - 30"-wide KitchenAid self-cleaning stainless steel electric wall oven
 - 30"-wide KitchenAid five-burner gas cooktop
 - 24"-wide KitchenAid dishwasher, integrated into custom cabinetry
 - 30" slim-line, slide-out range hood with three-speed fan
 - Microwave with trim kit elegantly integrated into custom cabinetry

Features

DRAFT



- Double stainless steel undermount sink with single-lever polished faucet and convenient pullout vegetable spray make for easy preparation and cleanup
- Light up your work area with contemporary pot lights and under-cabinet lighting
- Intelligent details throughout include soft-closing cabinetry and drawers, a USB/USB-C outlet and a dual-bin rollout recycling station

Brilliant Bathrooms

- Enjoy the convenience of a main-floor powder room with stylish laminate flooring and a contemporary vanity with an undermount sink
- Pamper yourself with a European-style thermostatic shower system featuring a frameless door, a rain shower head with a hand-held wand, integrated bench seating and a luxurious soaker tub (most homes)

- Vanities feature engineered stone countertops, dual rectangular porcelain sinks and oversized floating mirrors
- Main bathrooms feature a bathtub with porcelain tile surround, a rectangular porcelain undermount sink, porcelain tile flooring, engineered stone countertops and vanity lighting
- All bathrooms feature custom cabinetry matched with decorative brushed chrome pulls, porcelain tile flooring and dual-flush water closets

Smart Building

- As a Polygon TELUS Residential Smart Building, the homes at Partington Creek come with a series of advanced technological features for enhanced livability and elevated security, including keyless entry, smart home automation and more

Thoughtful Touches

- All homes are wired for technology, with pre-wired connections for high-speed cable and internet, and cable TV outlets in the main living areas
- Two hose bibs: one in the front and one in the rear yard
- Laundry closets built to accommodate a side-by-side or stacking 27"-wide washer and dryer (floorplan-specific); some homes feature dedicated laundry rooms with an undermount sink, engineered stone countertops and upper cabinet storage with hanging rod
- Private side-by-side double-car garages, with a Level 2 EV outlet, provide a safe haven for your belongings and keep your vehicles protected from the natural elements

Peace of Mind

- Keep your home and family safe with hard-wired smoke detectors and carbon monoxide monitors in all homes
- Entry doors feature heavy deadbolt locks and door viewers for added security, as well as recessed lighting at all front entries
- Comprehensive warranty protection by Travelers Insurance Company of Canada, including coverage for:
 - Materials and labour (2 years)
 - Building envelope (5 years)
 - Structural defects (10 years)
- Enjoy Polygon's after-sales care, provided by our dedicated Customer Service team



BALLANTREE, COQUITLAM

COMING SOON

BUILT RIGHT, BY POLYGON



THE HAMPTON CLUB AT HAMPTON COVE, LADNER

604.299.8573

partingtoncreek@polyhomes.com



HADLEIGH ON THE PARK, COQUITLAM

The quality homes at Partington Creek are built with care by Polygon Partington Creek Homes Ltd. With over four decades of homebuilding in British Columbia, the Polygon family of companies has built more than 34,000 homes throughout the Lower Mainland, from concrete high-rises and wood-frame condominiums to townhomes and single-family communities. During that time, Polygon has earned the trust of thousands of families by committing to quality design, sound construction and exceptional customer service.

